

QUINTREX CELEBRATES 70TH ANNIVERSARY

If you've owned a few boats in your life, then it's a fair bet at least one was a Quinnie.



70 years is most definitely a worthy anniversary celebration for an Australian boat building company. Established in 1945, Quintrex is surely the best-known boat brand in Australia.

Currently, there are nearly 100 models in the Quintrex range, a staggering figure when you think about it. The smallest is just 2.45m and the largest is 7m, incorporating Open Boats, Runabouts, Centre Consoles, Bowriders, Explorers, Hornets and Cabin models.

Quintrex prides itself on its research and innovative development. Wonderful examples of this are the implementation of stretch-forming technology to create the award-winning Millennium Hull and Flared Bow, followed by creation of the Millennium Blade Hull. Thanks to the success of Quintrex's innovative designs it has won *Aluminium Boat of the Year* over 10 times.

The first Quintrex hull, the brainchild of Terry Quantrall, was produced in Sydney in 1945.

The Flared Bow was first released in 1968 and has become a permanent fixture on

most Quintrex models. The stretch-forming technology used to create this marvel is still as revolutionary today as it was then. The design fundamentals used to create the Flared Bow paved the way for the development of the Millennium Hull and now the Millennium Blade Hull.

These days there are 99 models including cabins, bowriders, runabouts and open tinnies...

Quintrex, which had grown to become Telwater with Yellowfin, Stacer and Savage brands, felt the financial pinch of the Global Financial Crisis in 2010 and was forced to reduce staffing levels, and diversify into campervan manufacture in addition to boats. Before the GFC, there was a year when Telwater produced 15,000 boats in total; in 2014, the company built about 12,000 boats across all brands. Quintrex boats account for about 5,500 units a year.

The first Quintrex boats were 10, 12 and 14 foot, open varieties. These days there are 99

models including cabins, bowriders, runabouts and open tinnies, produced by more than 23 staff at the company's 4ha factory at Coome.

Quintrex has a well-established national dealer network incorporating over 60 dealerships across Australia. It also exports extensively to over 15 countries across the South Pacific, Asia, Europe and the Indian Ocean.

Smooth and comfortable to ride in, easy to handle and built to last, Quintrex is well on its way to achieving its vision to become the biggest and best little aluminium boat builder in the world.

To help celebrate its 70th anniversary, earlier this year Quintrex launched an upgrade of several popular models and an expansion of its hard-top range.

QUINTREX NEW 610 TRIDENT HARD TOP

Quintrex's Trident Hard Top (HT) came about following demand from customers and dealers for an expanded offshore fishing range. There are now six models.



The 610 Trident HT offers customers a slightly more versatile and affordable option while still incorporating all the features and strategic layout design of the larger Hard Top models.

Featuring a fully-enclosed hardened windscreen complete with sliding side windows and a windscreen wiper kit all as standard, the 610 Trident HT is a good boat to be in when the sea gets messy.

The only offshore range to feature Quintrex's Flared Bow and Blade Hull, the 610 Trident HT cuts through rough water with ease by deflecting spray and offering stability at rest and under way.

Constructed with 5mm marine grade aluminium bottom sheets and an underfloor rib structure, the 610 Trident HT is made to handle and manoeuvre through Australian waters and weather.

Built ready to fish, the standard 610 Trident HT model includes a live-bait tank with viewing window, large cutting board with drink and rod holders, 160L underfloor fuel tank, burley bucket and a 13L plumbed kill tank.



Left: NAFA contributor, Dan Bowater, is no little bloke... There's ample room in the Trident 610 Hard Top's cabin, with wide bunks. **Below:** The Quintrex 530 Cruiseabout has a massive 62% larger bow lounge area. **Bottom** With the renowned Flared Bow and Blade Hull, the 530 Cruiseabout is a great family and party boat. **Opposite:** Featuring a fully-enclosed hardened windscreen complete with sliding side windows and a windscreen wiper kit all as standard, the 610 Trident Hard Top is a good boat to be in when the sea gets messy.





Above: Quintrex's Top Ender 510 now features 4mm bottom sheets and 3mm side sheets.

Right: The Top Ender's console is smart, with a flip-up-lid compartment at the front.

Far right: There are four lockers at the Top Ender's bow and an underfloor fish box just before.



Quintrex National Account Manager, Cameron Wood, said the new 610 Trident HT was receiving rave reviews from the dealer network.

"The 610 HT is rated to a massive 200hp and measures in at around 6.2m with nice big cabin bunks which I think will make this boat exceptionally popular. You still get something that can handle offshore conditions but it's more affordable and perhaps more accessible if people are restricted with size and towing limits," Cameron said.

The Trident HT options include a stereo and speakers, vinyl wrap and bunk infill cushions for the cabin.

Like all the new Quinnies, the Trident 610 HT is available as an Instant Boating Package,

complete with trailer and motor and 3-year factory-backed warranty.

QUINTREX NEW HORNET RANGE

Quintrex has updated its Hornet series for 2015 with the entire range now featuring the successful Fighter Series shaped bow.

The Fighter Series features a wide "forked" shaped bow, designed to improve stability at rest whilst also increasing internal storage and the casting area.

The Fighter Series bow was first released in 2013 exclusively to the 450, 481 and 500 Hornet Trophy models and, after favourable reviews, was developed for the entire Hornet and Hornet Trophy range as well as Quintrex's Explorer range in models 390 and above.

The addition of the Fighter Series Bow sees a whopping 11% increase on the front casting deck across the entire Hornet Trophy range, including the popular 440 Hornet Trophy.

Also new to the Hornet Trophy range in 2015 is a deluxe carpet as standard as well as a new-look side console, while the 400 Hornet Trophy also receives larger gunnels. The 440 Hornet Trophy features a rear casting platform with a live-bait tank, a front casting platform, rod holders, transducer bracket and smooth-look 2mm marine grade aluminium top sides.

Quintrex National Account Manager, Cameron Wood, said the new Hornet range still offered exactly the same style of boat that anglers loved with the new improved shape offering extra room and stability.



Above: The Top Ender's optional rod locker is something most serious anglers would go for without hesitation.

QUINTREX NEW 530 CRUISEABOUT

Quintrex's new 530 Cruiseabout features more room to relax with an unbelievable 62% larger bow lounge area, making it a true rig of comfort and relaxation.

With the help of the new lounge area, the 530 Cruiseabout features a sleek and modern look internally, including new Luxe, premium carpet and a moulded, UV stable plastic top deck.

The 530 Cruiseabout is the perfect addition to the family complete with a deluxe folding rear lounge, rod holders, underfloor storage, rear ladder and a 95L fuel tank.

Built with the renowned Flared Bow and Blade Hull, the 530 Cruiseabout also features a smooth and reliable ride for all your needs whether you are cruising around or pulling a water skier.

Quintrex National Account Manager, Cameron Wood, said the new 530 Cruiseabout was a popular model in the bowrider range and the new lounge and internal look would be sure to get some attention at the boat shows this year.

"The 530 Cruiseabout is rated to 7 people and can carry a 130hp engine making it a very attractive family boat," Cameron said.

QUINTREX NEW 510 TOP ENDER

Quintrex's Top Ender series is back better and the 510 Top Ender now features 4mm bottom sheets and 3mm side sheets; both increased by a 1mm for extra strength and durability.

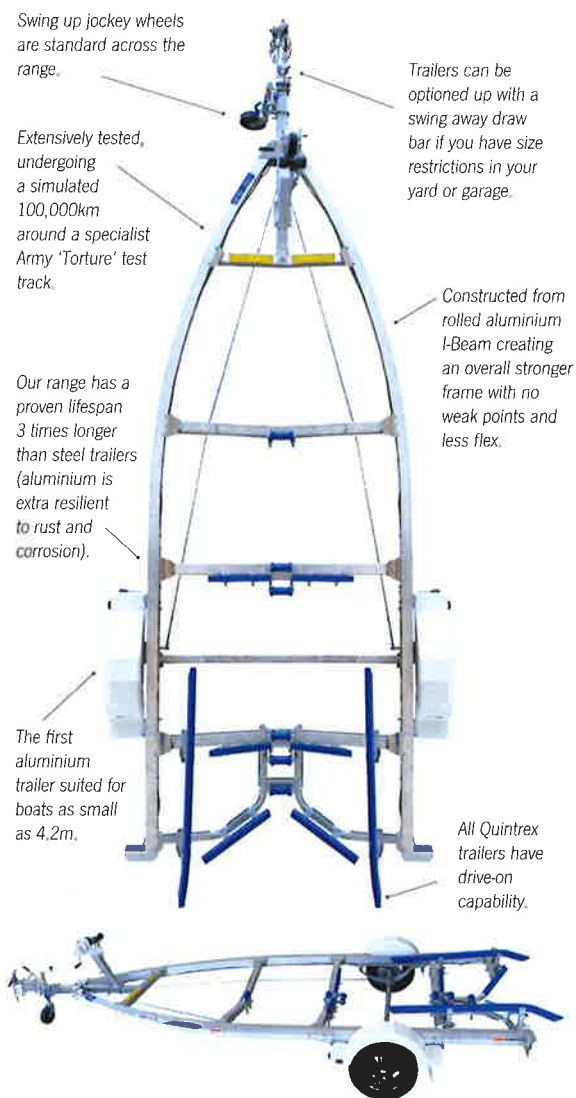
New practical features to the Top Ender range also include full-length side pockets, underfloor storage bins and a large anchor well opening.

The Top Ender with the Blade Hull really does offer a smoother and drier ride than its predecessor, with good stability at rest.

The 510 Top Ender comes standard with an impressive line of features including rod holders, a live-bait tank in the back deck, sounder, scupper drainage system and a rear ladder.

Serious fishos can option up the 510 Top Ender with a deluxe rod

Built tough by the best boat guys in the business.



You love our boats, now you can love our trailers. The new range of Quintrex aluminium trailers are perfect for your current Quinnie or as an upgrade for your existing boat. We've built in some unbeatable features and created a range big enough to match a long list of old and new boat sizes.



Find your nearest dealer at quintrex.com.au



QUINTREX

locker and an extra storage bin for the front casting platform.

Quintrex National Account Manager, Cameron Wood, said the new Top Ender range gives customers the features they had been asking for while keeping the price pretty much the same as previous models.

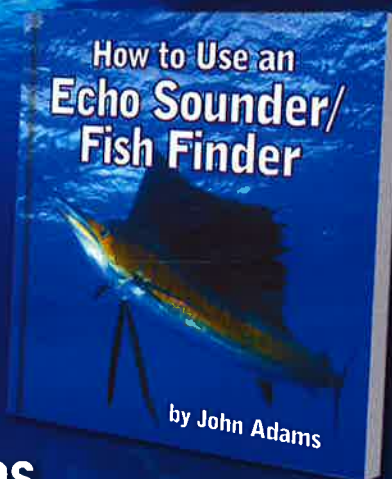
"We now also have new seat bases with lockable driving positions to make it more comfortable for driving, especially over long distances," Cameron said.

"The Top Ender is available in several sizes and models, so if you are looking for something to fish inside or outside, a console or tiller steer, there is a model for your type of fishing."

NAFA



Turn fishing into catching.



View sample pages and purchase online at:
www.howtouseafishfinder.com

Top: The new Hornet Fighter Series features a wide "forked" shaped bow, designed to improve stability at rest. The Hornet 440 cuts the water nicely.

Left: The addition of the Fighter Series Bow sees a whopping 11% increase on the front casting deck across the entire Hornet Trophy range. The amount of fishing room in the 420 is impressive... a great estuary boat for a first-time boat buyer.

Right: More than half of the Hornet 440 is casting platform, thus offering the added bonus of mega storage space.

EXPLORER CHOSEN AS BIRTHDAY BOAT

To celebrate Quintrex's 70 years of boat building, the company has chosen to upgrade its top-selling Explorer boats.

BY STEVE COOPER



“If it ain't broke, don't fix it.”

The saying has widespread support, and is a source of inspiration to conservative-minded anglers; however, time and technology move on and there is always room for improvement.

Such is the case with the Quintrex Explorer, a boat regarded as something of an icon by many estuary and freshwater anglers. For 20 years, Quintrex's Explorer range has offered boaters an affordable and reliable tinnie versatile enough to fish creeks, to use as a tender or to car-top. An all round, no-fuss tinnie, the basic design of the Explorer has remained unchanged – until now, that is.

Quintrex has done the unthinkable and given its most popular boat range a huge update. It is a mark of the standing of the Explorers that Quintrex chose them to carry the flag for its 70th anniversary celebrations.

The new range of Explorers is designated the “F” series. Quintrex national account manager Cameron Wood said the 390 Explorer has long been a “best selling” model; however, the new design is a “game changer” that will grab the interest of everyone, from stalwart Explorer fans to first-time boat owners.

Design changes go beyond a cosmetic facelift. Explorer boat users will be surprised at how much the company has been able to improve the range. The new models are roomier, drier, and more stable, offer better handling, and come with more feature options.

Explorer boat users will be surprised at how much the company has been able to improve the range.

To prove the point, Quintrex set up a “Dinghy Derby” on the Nerang River near the Sanctuary Cove Resort on the Gold Coast. The 200m-slam consisted of two lines of six buoys, about 150m apart. The gaggle of boating writers was divided into two teams, and each writer assigned to one of the eight boats. The boats ran down, and in and out of the buoys, turning around the last buoy then repeating the run back to the starting point. It was a race. I came away impressed at the

handling and stability of the Explorers.

“With a new forked bow design, the Explorer range features wider chines generating better stability at rest,” Cameron said.

“There is extra room for your fishing gear, and the sharper entry point creates an even softer-riding hull.”

“There is extra room for your fishing gear, and the sharper entry point creates an even softer-riding hull.”

“As one tough tinnie, the new Explorer features stronger side sheets and a sleek new look thanks to a new pressing design,



Top: Experienced Explorer users will appreciate the wider chines that result in improved stability at rest.

Left: On the bow, the front casting platform and underfloor storage is 10 per cent larger across all models. norm.

which increases strength by 50 per cent in comparison with previous models.”

The new Explorer models are the 390F, 400F, 420F and 440F, and already the new forked-shaped bow deck has been unofficially named the “pickle fork.” There is more fishing room in the new models. On the bow, the front casting platform and underfloor storage is 10 per cent larger.

Experienced Explorer users will appreciate the wider chines that result in improved stability at rest. The deeper entry point in the bow had increased the deadrise in the 390F and 420F Explorers by about seven degrees, and made for a softer ride. The 420 Explorer is used all over Australia, and it features 2mm bottomsides, and a massive, for its size, 1.88m beam.

Packed with most fishing needs, the Trophy range includes front and rear casting platforms and rod holders as standard, while

the 440 Explorer has the option of a rod locker with an easy access lift-up door.

The Explorer range is idolised for being a no-fuss tinnie, and the base model of some boats come with bench seats. In the 390F, for example, this would keep the weight down and so would suit the boat’s use as a car topper. This doesn’t mean Quintrex doesn’t offer comfort options, and these can vary depending on model. You can choose different configurations, from side console to tiller steer, and there are items like a casting platform, rod holders, Bimini and envelope, transom step and rail, bait well and tackle box.

Livery on the test boats was designed for the anniversary year. This is an added extra, but it lifts the look of the boats beyond the norm, and is more pleasing to the eye than having a load of advertising stickers from tackle manufacturers along the sides.

The test boats were run with E-TEC and

Vortex outboards. The Vortex is a cheaper, entry-level motor; however, the Quintrex people I talked with were impressed with the power and reliability of these outboards.

390F Explorer

Length: 3.95m
Beam: 1.79m
Depth: 0.77m
Bottomsides: 1.6mm
Topsides: 1.6mm
Transom: 1.6mm
Weight (boat only): 105kg
Powered by a 15HP Vortex:
 top speed 32km/h (20mph)

400F Explorer Trophy

Length: 4.17m
Beam: 1.88m
Depth: 0.86m
Bottomsides: 1.6mm
Topsides: 1.6mm
Transom: 2mm
Weight (boat only): 265kg
Powered by an 18HP Vortex:
 top speed 34km/h (21mph)

420F Explorer

Length: 4.36m
Beam: 1.88m
Depth: 0.90m
Bottomsides: 2mm
Topsides: 1.6mm
Transom: 2mm
Weight (boat only): 295kg
Powered by a 30HP Vortex:
 top speed 45km/h (28mph)

440F Explorer Trophy

Length: 4.52m
Beam: 2.05m
Depth: 0.91m
Bottomsides: 3mm
Topsides: 2mm
Transom: 3mm
Weight (boat only): 350kg
Powered by a 40HP ETEC Evinrude:
 top speed 50km/h (31mph).

Top: Livery on the test boats was designed for the anniversary year, and lifts the look of the Explorers impressively.

Left: The 420 Explorer is used all over Australia and it features 2mm bottomsides, and a massive for its size, 1.88m beam.

